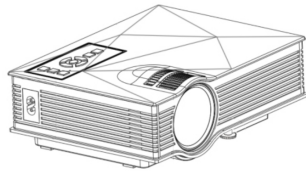




# Simplified Micro Projector UC46+ User Guide



For more help pls visit [www.dowlab.com](http://www.dowlab.com)

\* Pls refer to actual product if color or appearance may differ.

1. Please read this manual carefully before using.
2. National standard power cable and power cord with grounding is suggested, so as to ensure stable power supply.
3. No peeking into the lens while projector is working.
4. No cloth, blanket or any other material that could stock ventilation holes should be placed around the projector while it is working.
5. No water-proof function for this projector, no such apparatus as vase or cup should be put around the projector.
6. Projector should be stocked and used at dry and clean condition.
7. Please turn off the projector and cut off the power supply, if it is not used for long time.
8. Please use factory original foam and other shockproof material while transporting.
9. If found projector defected, do not attempt to repair it by yourself. Please contact with your distributor or factory directly.

## Product Details

### Keyboard

1. Esc/Exit
2. Play/Pause
3. Up/Down/Left/Right
4. Okey
5. Power on/off
6. Input
7. Menu

### Input Interfaces

1. 3.5 mm Audio Output
2. 3.5mm Audio Output
3. HDMI input
4. USB input
5. 5V Power Output
6. SD card input
7. VGA Input

### Remote Control

1. Input
2. Play/Pause
3. Power on/off
4. Next
5. FF
6. Okey
7. Right
8. Zoom
9. Vol+
10. Vol-
11. No Function
12. Information
13. Turn
14. Image Mode
15. Esc/Exit
16. Down
17. Left
18. Up
19. FB
20. Last
21. Menu
22. Mute

### AC Power

1. AC Power

### Height Adjustment

1. Height Adjustment

### Lens

1. Focus Handle
2. Keystone Correction

**Note:** Do not mix use old and new batteries. If remote not used for long time, batteries should be removed. Remote should be target at the IR Receiver.

### Product Specifications

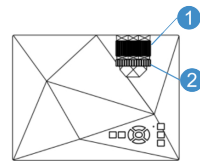
Image System: LCD	Lamp: LED
Brightness: 1200 Lumens	Contrast Ratio: 800:1
Native Resolution: 800*480	Power Supply: 100-240V 50/60Hz
Highest Res: 1080P	Operation: manual
Input: USB/SD/HDMI/VGA/IR	Power Consumption: 55W(max)
Lamp life: 20000 Hours	Aspect Ratio: 4:3/16:9
Projection Dist.: 1.07-3.8M	Pic Size: 34-130(Inches)
Product Size: 201*153*67.5MM	N.W.: 1KG
Output: 3.5mm earphone	Language: 23 countries

### Support Formats

Audio :  
 3GP(H263,MPEG4)/AVI(XVID, DIVX, H264)/MKV(XVID, DIVX, H264)  
 /FLV(FLV1)/MOV(H264)/MP4(MPEG4, AVC)/MPG(MPEG1)/VOB  
 (MPEG2)/RMVB(RV40)  
 Video : MP3/WMA/ASF/OGG/AAC/WAV  
 Photo : JPG/PNG/BMP  
 Text : TXT

### Keystone & Focus

1. Focus  
Put the projector with lens vertical to the wall or screen, turn on the projector and then adjust focus adjusting handle (As showed in 1) until the picture is clear.
2. Keystone Correction :  
If projector is not vertically or horizontally placed, the image will present trapezoid twist. Keystone correction technology refers to a kind normalizing the twisted image via digital or optical technology.



Vertical Solution  
 Rotate the keystone correction nut as Above showed, until image twist be corrected. keystone correction angel is ± 15°



Horizontal Solution  
 No solution for this kind of image twist for this projector.

### Power On/Off

1. Power On  
Connect the projector with power cord, then plug the power cord into AC connector. When the indicator light stops flashing, projector is under standby status.
2. Multimedia Screen  
After projector is on, it comes out boat logo for 2 seconds, then enter into the main interface as below 1 shows.



1 Main Interface

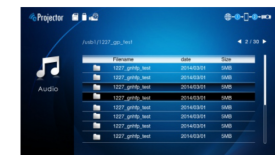
3. Power Off  
Press button of power on the projector or remote control, indicator flashing for 3 seconds, projector is off.

### Multimedia Operation



\* Multimedia Interface

Press **[Image]** on the projector or remote control to choose relevant icon and press **[OK]** to enter into multimedia types as left pic showed. Press **[Image]** on remote control to enter into submenu, then press **[OK]** to display any file you saved here.



\* Audio Menu

After enter into submenu, **[Image]** Press button of to choose file you need. Then press **[OK]** to display.

### Multimedia Screen

Press button of "OK" to enter into submenu of Multimedia(Video/Music/Photo/Txt). Press button of "OK" to choose relevant function icon. Press "OK" to display. Available setting items are: Video, Music, Photo and Txt. Details as below:

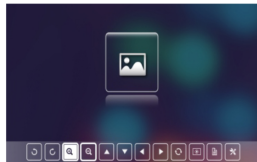


\* Video Interface



\* Music Interface

- Play/Pause
- Previous/Next
- FB/FF
- Turn
- Vol-/Vol+



\* Photo Interface

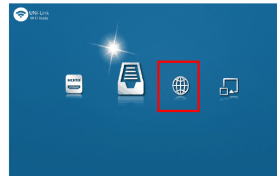


\* Text Interface

- Rotate to the left/Rotate to the right
- Zoom in/Zoom out
- To up/To down
- To left/To right
- Turn
- Power point
- Photo info.
- Setting
- To up/To down
- To left/To right
- Zoom in /Zoom Out
- Photo info
- Clicking "x" to close

### Wireless Connection

Android/iOS/Windows system connected with the projector



In main interface, press button "W" to choose wifi(EZCast) function icon, press button of "OK" to enter into submenu as left pic shows.



Open your phone(android/iOS system)wifi,find the name as Uni-Link then put password when enter into Ezcast interface on the projector as left pic shows.

▶ iOS device/Android device :

Open wifi on your mobile with android/iOS system to find the name begin with uni-Link(iOS connection as below left pic, android system connection as right pic.),then put password to connect successfully.



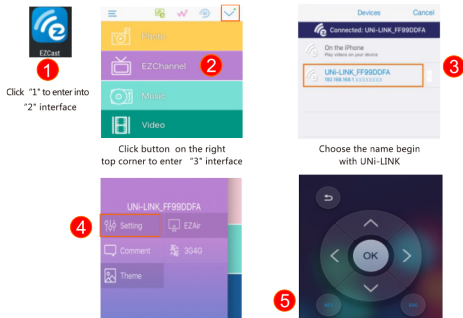
1 iOS



2 Android

### Projection by connecting to router

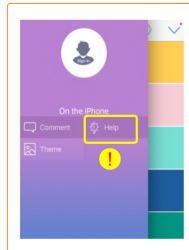
Use Ezcast software when in mobile,laptop or computer system end. Projection by connecting to router can enhance the internet signal.



### Router connection interface in projector



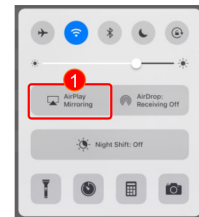
Note : For function of "help" just can be used in mobile wifi connection as below pic.



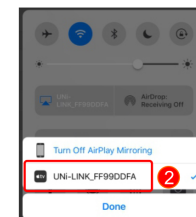
Choose your router wifi name to connect successfully.(Complete SYNC setting)

### How to use wifi display

iOS



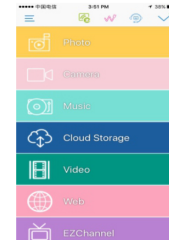
- Upside to open iOS notification center as above pic showed
- Choose option of AirPlay



- Then it will come out begin with Uni-link device interface
- Select to be connected successfully. Phone/pad image will be synchronous projectioned to the projector.

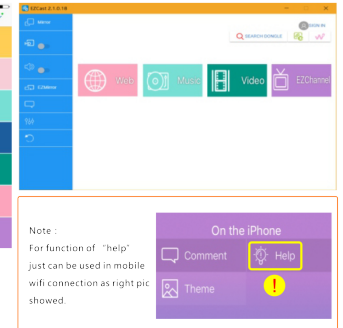
Note : With screen and push of iOS device do not need Ezcast APP.

Android



Android and PC end device need use Ezcast app to complete same screen and push function

PC



Note : For function of "help" just can be used in mobile wifi connection as right pic showed.