

## 1. Product Description

With the Avantree Avera Bluetooth audio receiver, you can wirelessly play, control and listen to all your favorite media from your smart-phone, tablet or PC through your speaker, headphones, or car stereo system. When fully charged, Avera provides up to 16 hours long play time or continuous use when powered via USB. Compact design means it can be discreetly hidden out of sight. Avera uses Bluetooth 3.0 with EDR to provide you with high fidelity and premium sound.

- 1 -

## 2. Product Overview

- (1) LED indicator (indicates power on/off/pairing/standby/low battery status)
- (2) Multi-Function Button (MFB) (for power on / off / pairing )
- (3) Micro USB charging socket
- (4) 3.5 mm audio jack

### What's in the box:

- Avantree Avera
- 3.5mm to 3.5mm audio cable
- USB charging cable
- RCA cable
- User manual
- Gift Card



- 2 -

## 3. Charging

Avera comes with a built-in rechargeable battery that provides up to 16 hours working time or 190 hours standby time if connected to a Bluetooth device. We recommend fully charging the battery before using it for the first time.

- 1) Insert one Micro USB charging cable end into Avera Micro USB socket and put the other end into a standard USB power outlet, such as laptop, wall socket, or car charger.
- 2) It takes 3 hours to fully charge for the first time. Each subsequent charge cycle takes around 2.5-3 hours
- 3) LED will indicate red when charging, and goes off when charging is complete.
- 4) If you have not used the device for a few months, the LED might not turn red when first charging. It might take 15-35 minutes before the LED turns red.
- 5) We suggest fully charging the device at least every 2 months.

## 4. Turn On/Off

Turn On: press and hold the MFB button for about 3-5 seconds until the blue LED flashes once with a beep sound

Turn Off: press and hold the MFB button for about 3-5 seconds until the red LED flashes once with beep sound then go off.

- 3 -

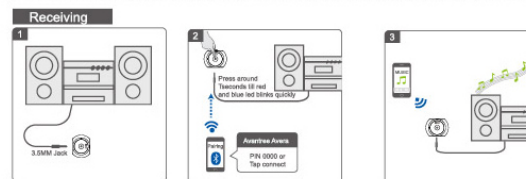
## 5. Working with a Bluetooth device (Tutorial online)

Pairing procedure:

- A. Plug the 3.5 mm audio cable into Avera's 3.5 mm audio socket. Plug the other end (or 2 x RCA) into the audio input of your home hi-fi stereo system.
- B. Keep the receiver Avera and your Bluetooth source device (eg. smart-phone, tablet, laptop, etc) within 1 meter.
- C. Press and hold the MFB button of Avera from power off status for around 6-8 seconds until the blue and red LEDs flash quickly and alternatively, indicating it is in pairing mode.
- D. Make your Bluetooth source device into pairing mode: Taking an iPhone as an example. Tap setting > Bluetooth > Bluetooth on > Avantree Avera, Avera will automatically connect with your iPhone.

- 4 -

E. After successful pairing and connection, the Blue LED will blink twice every 4 seconds.



**Note:** Pairing mode will last 3 minutes, if no device can be paired during this period, Avera will automatically turn off.

- Avera can be paired with stereo Bluetooth device using PIN codes "0000"; "1111"; "8888" and "1234".
- Turn on Avera, it will auto enter into standby mode, then auto turn off after 10 minutes
- Avera can remember 8 paired device, but it can only connected with 1 device each time. When the number of paired devices exceeds 8, the first one will be replaced.
- Each time Avera turns on, it will connect to the last connected device automatically based on last paired device in range and Bluetooth visible. If you want to pair it to other devices, turn

- 7 -



- 5 -



- 6 -

off the current device's Bluetooth function first and try to pair the receiver to the new device according to the above procedures.

LED status:

Function	Operation procedure	LED indicator
Power on	Press MFB for 3-5 seconds	Blue led flashes once
Power off	Press MFB for 3-5 seconds	Red LED flashes once
Pairing mode	From power off status, press MFB button for 6-8 seconds	Red and blue LEDs flash quickly and alternatively lasts for 3 minutes
Play / pause	Short press MFB button	
Charging	Plug charging cable into Avera Micro USB socket, Avera will auto power off	Red LED on during charging
Charging complete		Red LED off after charging complete.

- 8 -

Charging whilst streaming music	Form power off status ,please press MFB button once,to make Avera connect with last connected device.	Red LED on and blue LED flashes once
---------------------------------	---	--------------------------------------

We find most problems are caused by improper pairing. Please follow the instructions step-by-step.

## 6. Product Specification

- Bluetooth V3.0+EDR
- Bluetooth profile supported: A2DP and AVRCP
- Operation range: Class 2, 10 meters
- Power output: 5V, 200mA
- Working time: 16 hours
- Standby time: 190 hours connected with a device;
- Charging time: 3 hours.
- Charging input voltage: DC 5V
- Battery: 300mAh rechargeable li-polymer battery

- 9 -

- Weight: 15g
- Size: 50mm (L) x 37mm (W) x 15mm (H)

## 7. FAQs

- A) Why can't the Avera be paired with a phone?
- Make sure Avera is in pairing mode.
  - Pairing mode will last 3 minutes; it will turn off if no device is paired.
  - Please check if your phone supports A2DP profile, have turned on Bluetooth and all nearby Bluetooth devices are showing.
- B) Why can't Avera be paired and connected with a laptop?
- Please make sure your laptop has Bluetooth function and the Bluetooth software support audio profile "transmit".
- C) Why Avera turned off when supply power to it?
- Press the MFB button to turn on Avera. It will automatically connect with the last paired device and stream music whilst charging.

## 8. Safety Information

- To avoid any damage or malfunction to the device, do not drop it from high places.

- 10 -

- Reorient or relocate the receiving antenna.
- Increase the separation between the equipment and receiver.
- Connect the equipment into an outlet on a circuit different from that to which the receiver is connected.
- Consult the dealer or an experienced radio/TV technician for help

### 9.2. EU

This product is CE certified according to the provision of the R&TTE Directive (99/5/EC). Declare that this product is in compliance with the essential requirements and other relevant provisions of Directive 1999/5/EC.

### 9.3. Trademark Statement

The Bluetooth word mark and logos are owned by the Bluetooth SIG, Inc. Avantree is a trademark owned by Avantronics Limited.

## 10. Warranty

To avoid any damage or device malfunction, do not drop it from high places.

- 13 -

Keep the device away from humidity, water or any other liquid. If the device is exposed to water, do not operate it to avoid electrical shock, explosion or damage to the device or yourself. Do not place or keep this device near any heat source, such as direct sunlight, radiator, stove or other apparatus which produces heat. It may cause explosion, degrade the performance and/or reduce battery life. Do not modify, repair or disassemble the device (especially battery). It may cause an explosion. Doing so will void the warranty. Do not place heavy objects on the device. Use only the supplied and approved charger. Service must be done by a qualified service center or manufacturer. Unplug this device when unused for long periods of time or during lightning storms.

### CAUTION: ELECTRIC SHOCK HAZARD

The battery used in this device may present a risk of fire or chemical burn if mistreated.

- Keep device away from humidity, water and any other liquid. If the device is exposed to water, do not operate it to avoid electrical shock, explosion or damage to the device or yourself.
- Do not place or keep this device near any heat source, such as direct sunlight, radiator, stove or other apparatus which produces heat. It may cause explosion, degrade the performance and/or reduce battery life.
- Do not modify, repair or disassemble device (especially battery). It may cause an explosion. Doing this will void the warranty.
- Do not place heavy objects on the device.
- Use only supplied and approved charger.
- Replacement or service must be done by a qualified service center or manufacturer.
- Unplug this device when unused for long periods of time or during lightning storms.

### CAUTION: ELECTRIC SHOCK HAZARD

The battery used in this device may present a risk of fire or chemical burn if mistreated.

## 9. Declaration of Conformity

### 9.1. FCC Statement

- 11 -

This device complies with Part 15 of the FCC Rules. Operation is subject to the following two conditions:

- 1) This device may not cause harmful interference.
- 2) This device must accept any interference received, including interference that may cause undesired operation.

Changes or modifications not expressly approved by the party responsible for compliance could void the user's authority to operate the equipment.

**NOTE:** This equipment has been tested and found to comply with the limits for a Class B digital device, pursuant to Part 15 of the FCC Rules. These limits are designed to provide reasonable protection against harmful interference in a residential installation. This

equipment generates, uses and can radiate radiofrequency energy and, if not installed and used in accordance with the instructions, may cause harmful interference to radio communications.

However, there is no guarantee that interference will not occur in a particular installation. If this equipment does cause harmful interference to radio or television reception, which can be determined by turning the equipment off and on, the user is encouraged to try to correct the interference by one or more of the following measures:

- 12 -



## Bluetooth Audio Receiver (Avera)

16 hour play time, compact, portable, rechargeable



## User Guide

Avera

## Online Tutorial & Technical Support

More information about this product and other Avantree Bluetooth products, including the video user guide, product tutorial and online technical support, please refer to [www.avantree.com](http://www.avantree.com) website.

Due to software update, there could be some changes on operations. Always refer to our Product Tutorial page on the Avantree website for the latest features.

Dispose of the packaging and this product in accordance with the latest provisions.



FCC ID: WJ5-BTRC201  
Z-PKMN-RC201C-0000