

**LASER**



PW-METERSK SINGLE SOCKET POWER  
METER WITH LCD

PW-METERSK USER MANUAL

# User Manual

# PW-METERSK USER MANUAL

## IMPORTANT SAFETY INSTRUCTIONS AND PRECATIONS

---

### IMPORTANT SAFETY INSTRUCTIONS AND PRECAUTIONS

- Read instruction carefully before using this product
- Observe all warnings and cautions when using this product.
- Retain all manuals and documentation for future referral.
- This product is designed for indoor use only.
- Only use this product in a manner described in this manual.
- Do not overload. The maximum resistive load is 9.9Amps, 2376W
- Do not use this device in extremely hot, cold, humid, dusty or sandy environments.
- Do not use this device in electrical storms or other conditions if the likely hood of lightning is possible.
- Before using this device, check and make sure the electrical appliances are correctly and properly connected and installed according to the requirements of those appliances.
- Remove the PW-METERSK from the mains outlet before cleaning. Turn connected device and the power outlet the PW-METERSK is plugged into OFF before removing.
- Do not operate any appliances with a damaged cord or plug.
- Do not try to repair, disassemble or modify this device. There are no user-serviceable parts.
- This device is intended to be plugged in or connected to a 240 VAC., 50Hz and grounded power supply only.
- Arrange power cords away from traffic areas where it will not be tripped over.
- This device may be warm while in use. Keep it in dry and cool place well ventilated place. Do not cover this product.
- Extreme Care should be taken when using this product near any body of water such as kitchen sinks, baths and alike.

# PW-METERSK USER MANUAL

## IMPORTANT SAFETY INSTRUCTIONS AND PRECATIONS

---

- This device is not waterproof. Do not use this device in the open if there is a high level of moisture in the air.
- Ensure that cables attached to the device can not cause the device to fall.
- There are no serviceable parts in this device. Attempts to open this device by unauthorised personnel may cause further damage and void the warranty.
- Images of product used in this manual are indicative only and may vary slightly from actual product.
- We reserve the right to make changes to this document and the product without notification.

## COMPULSORY WARNING

Discard this device if the pins, enclosure or LCD is damaged.

Loads on any power boards or surge protectors of this type are shown as a maximum only.

Please ensure that power loads are balanced over the available power circuits in the premises that this product is to be used in.

Other power distribution boards or "Double Adaptors" may be connected to this product. Please ensure that the total demand of all connected device does not exceed the maximum load.

# PW-METERSK USER MANUAL

## TABLE OF CONTENTS

---

### TABLE OF CONTENTS

IMPORTANT SAFETY INSTRUCTIONS AND PRECAUTIONS.....	2
COMPULSORY WARNING .....	3
<i>Getting Started</i> .....	5
Discovering the Energy Meter with COST and CO2 .....	5
Clearing all the Cumulative Data.....	6
Setting New Energy Rate .....	6
Setting a New CO2 Emission Rate .....	6
About the Energy Meter.....	7
Surge Protection .....	7
Protection rating .....	7
Energy Saving Tips.....	7
TROUBLE SHOOTING .....	8
WEEE Directive & Product Disposal: .....	8
TECHNICAL SPECIFICATIONS.....	9
FOR OTHER ACCESSORIES AND PRODUCTS.....	9
CONTACT INFORMATION .....	9

# PW-METERSK USER MANUAL

## GETTING STARTED

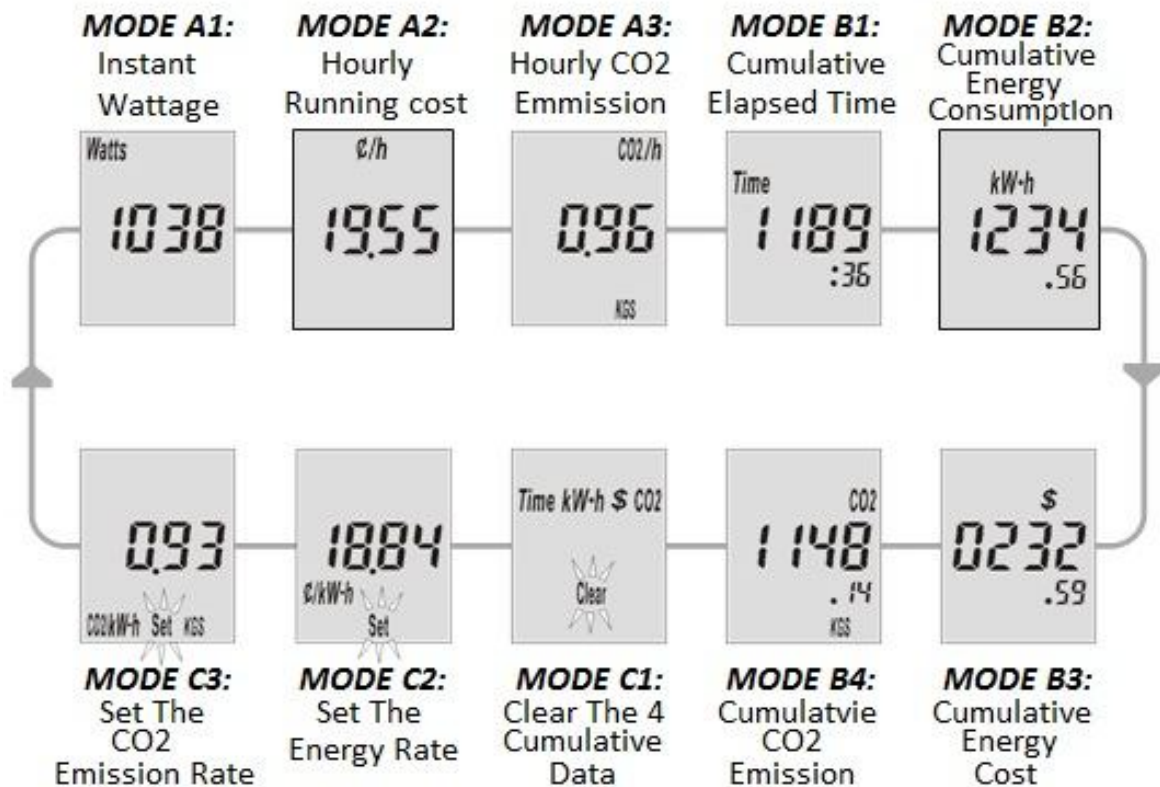
### GETTING STARTED

The LCD will not operate until the PW-METERSK is connected to a power outlet and the outlet is turned on.

The screen will display a self test for a few seconds before returning to normal display.

### DISCOVERING THE ENERGY METER WITH COST AND CO2

Press the **METER ↑** button to step through the features, The LCD will cycle the display modes from **MODE A1** to **MODE C3** as shown below. Modes **A1** to **B4** display the information about the device plugged in to the PW-METERSK.



# PW-METERSK USER MANUAL

## CLEARING ALL CUMULATIVE DATA

---

### Clearing all the Cumulative Data

1. Press the **METER ↑** button and repeat to step through the displays **MODE C1** is shown. The screen should show all four data types and the word **CLEAR** should be flashing in the lower right hand corner of the display.
2. With the word **CLEAR** flashing, press the **ENTER** button once to clear all stored cumulative data. The data collection will begin again.

### Setting New Energy Rate

The energy rate is preset at 18.84 cents per kilowatt-hour ((kW-h) Australian average figure as per 2008).

Please use the following to reset the cost as per your energy provider.

1. Press the **METER ↑** button and repeat to step through the displays **MODE C2** is shown. **¢/kW-h** should be displayed and the word **SET** should be flashing in the lower right hand corner of the display.
2. With the word **SET** flashing, press the **ENTER** button once. The first figure will start flashing ready for adjustment.
3. Press the **METER ↑** button to adjust the flashing figure upwards. When the figure is correct press the **ENTER** button to confirm.
4. Repeat steps 2 and 3 to adjust the following two figures. When the last figure has been adjusted the LCD will display the new rate.

### Setting a New CO2 Emission Rate

The CO2 emission rate is preset at 0.93 kilograms per kW-h (Australian average figure in 2008).

Please use the following to reset the rate if update figures become available.

1. Press the **METER ↑** button and repeat to step through the displays **MODE C3** is shown. **CO2/kW-h** should be displayed and the word **SET** should be flashing in the lower right hand corner of the display.
2. With the word **SET** flashing, press the **ENTER** button once. The first figure will start flashing ready for adjustment.

# PW-METERSK USER MANUAL

## ABOUT THE ENERGY METER

---

3. Press the **METER ↑** button to adjust the flashing figure upwards. When the figure is correct press the **ENTER** button to confirm.
4. Repeat steps 2 and 3 to adjust the following two figures. When the last figure has been adjusted the LCD will display the new rate.

## ABOUT THE ENERGY METER

1. All cumulative data is set to zero before leaving the factory after testing.
2. If the power supply to the PW-METERSK is interrupted, all cumulative data is saved.
3. When one of the cumulative data records reaches its maximum value, all data sets will be zeroed. And data recording will begin again.

## SURGE PROTECTION

The PW-METERSK has in-built surge suppressors to protect all plugged in devices from a power spike or surge.

### Protection rating

Surge Current (L-N):	Max = 2,500Amps
Surge Energy:	140 Joules

## ENERGY SAVING TIPS

1. If connected devices are not to be used for longer periods turn them off at the wall outlet. Rather than leave them running on standby.
2. Monitor and record the power needs of all device connected to the PW-METERBD. When these products need to be replaced, use the recorded power consumption information to make informed decisions for purchasing low power and Greener products.



# PW-METERSK USER MANUAL

## TROUBLESHOOTING

### TROUBLE SHOOTING

PROBLEM	SOLUTION
The PW-METERSK has no power.	<ul style="list-style-type: none"><li>The wall outlet may not function. Try another outlet.</li></ul>
There is nothing shown on the LCD.	<ul style="list-style-type: none"><li>Data on the LCD will only be displayed when the device is turned on.</li></ul>
It's possible the PW-METERSK has lived through a large power spike or surge. Is it safe to still use?	<ul style="list-style-type: none"><li>If the Board has suffered from a power surge/spike that has damaged the protection we strongly recommend that the PW-METERSK be disposed of and a replacement purchased.</li></ul>

### WEEE Directive & Product Disposal:



At the end of its serviceable life, this product should not be treated as household or general waste. It should be handed over to the applicable collection point for the recycling of electrical and electronic equipment, or return to the supplier for disposal.

# PW-METERSK USER MANUAL

## TECHNICAL SPECIFICATIONS

---

### TECHNICAL SPECIFICATIONS

Product Code	PW-METERBD
Length	44 mm
Depth	40 mm (not including pins)
Height	108 mm
Weight	100 grams
Rated Voltage	240V AC @ 50Hz
Rated Current	9.9A 3376W
Surge Current (3Lines)	Max. 2500A
Surge Energy	Max. 140 Joules
Meter Accuracy	1watt (typical), 2watts (max) for loads below 100W: 1% (typical), 2% (max) of measured values for loads above 100W.
Power Meter Consumption	0.9W
Conforms with:	AS/NZS 3100, AS/NZS 3112, AS/NZS 3122, AS/NZS 61010. <b>Certificate: SAA 110049EA</b>

### FOR OTHER ACCESSORIES AND PRODUCTS

<http://www.laserco.net>

### CONTACT INFORMATION

For more information on this product and technical support please visit  
[HTTP://WWW.LASERCO.NET](http://www.laserco.net)